

# FOR LEASE

## Tanasbourne Business Park

8427, 8531, & 8695 NE Cornell Rd  
Hillsboro, OR 97124



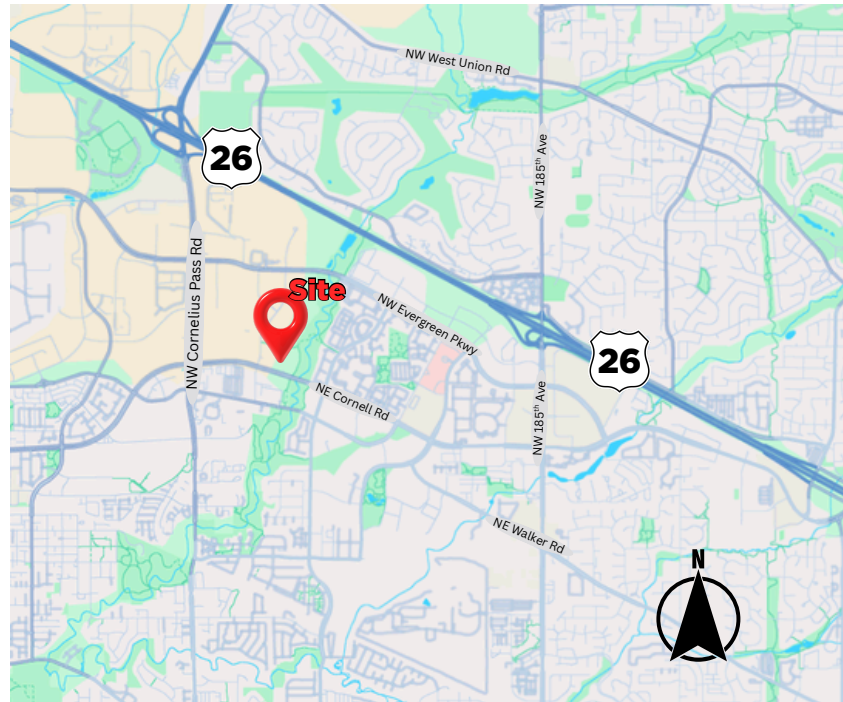
Imagine working in a  
**perfect space.**

### Location

- Superior Sunset Corridor location
- Outstanding visibility with Cornell Road frontage
- 1 mile from Highway 26
- Close to amenities: Tanasbourne Town Center, Streets of Tanasbourne, food, shopping, fitness & hotels.

### Building Highlights

- Flexible MP (Industrial Park) Zoning
- Flexible sizes/configurations
- Dock and Grade loading doors
- 20-24' ceiling clear height
- Fire sprinklered with 3-phase power throughout
- Well-maintained, professional setting
- Locally-owned and managed
- Please call for competitive pricing and more info



For more information, please contact:  
**Erin Gram**

☎ (503)626-3500

✉ [erin.gram@pnwprop.com](mailto:erin.gram@pnwprop.com)

[pnwprop.com](http://pnwprop.com)

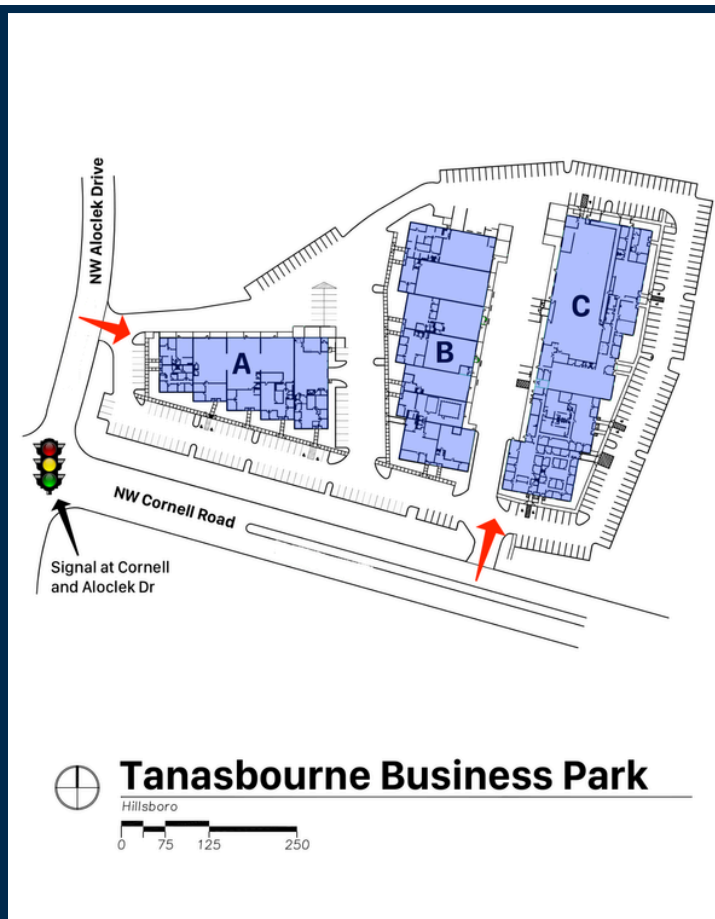
The information contained herein is believed to be accurate but is not warranted as to its accuracy and may change or be updated without notice.

**PACIFIC NW**  
PROPERTIES

# FOR LEASE

## Tanasbourne Business Park

8427, 8531, & 8695 NE Cornell Rd  
Hillsboro, OR 97124



For more information, please contact:  
**Erin Gram**

📞 (503)626-3500

✉ [erin.gram@pnwprop.com](mailto:erin.gram@pnwprop.com)