

Tigard Triangle Commons

Class A
Suburban Office
Building with
Modern Finishes,
High Ceilings and
Locally-Owned
and Managed



Class A



Freeway
Access



Parking
Garage



FOR LEASE 11850 SW 67th Avenue \\ Tigard, Oregon



JENNIFER MEDAK
Senior Vice President
+1 503 542 5899
jennifer.medak@colliers.com

JOHN MEDAK
Senior Vice President
+1 503 542 5898
john.medak@colliers.com

FOR LEASE 11850 SW 67th Avenue // Tigard, Oregon



Premier office location at the confluence of I-5 and Hwy 217



Parking Garage



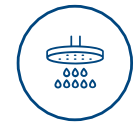
Class A Office



Freeway Access



Bike Storage



Showers On Site

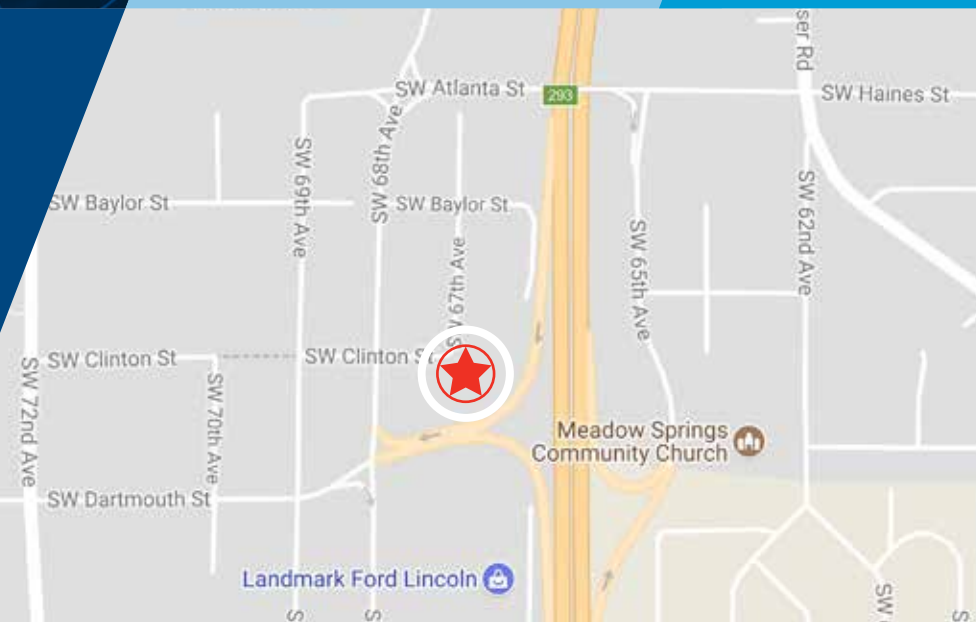


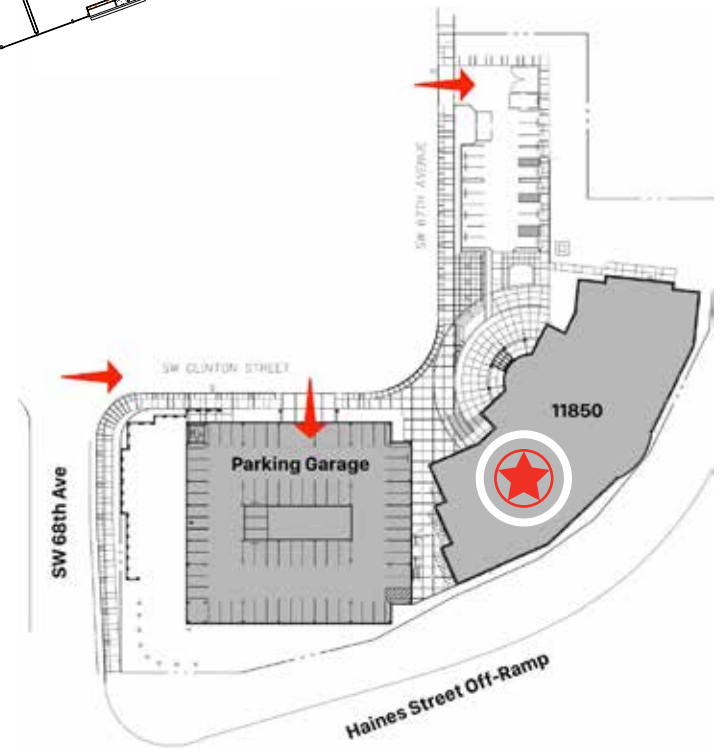
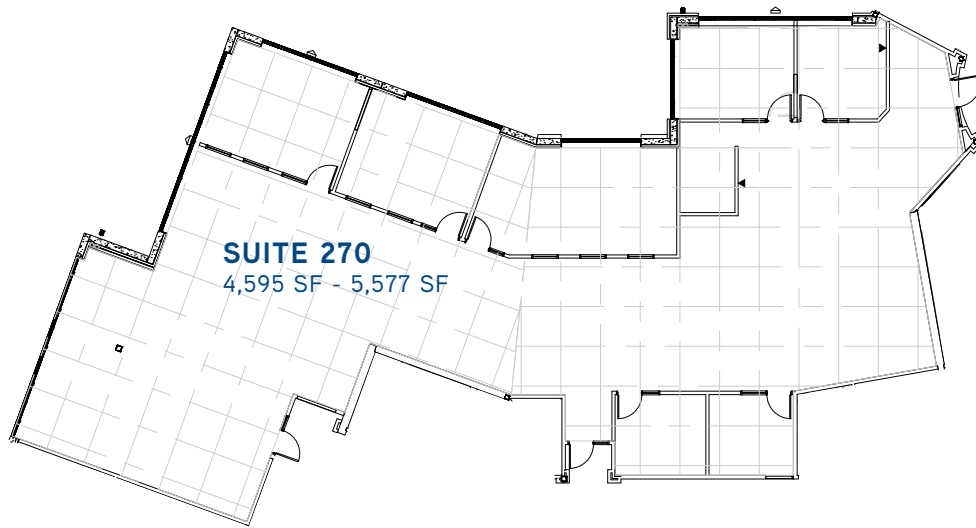
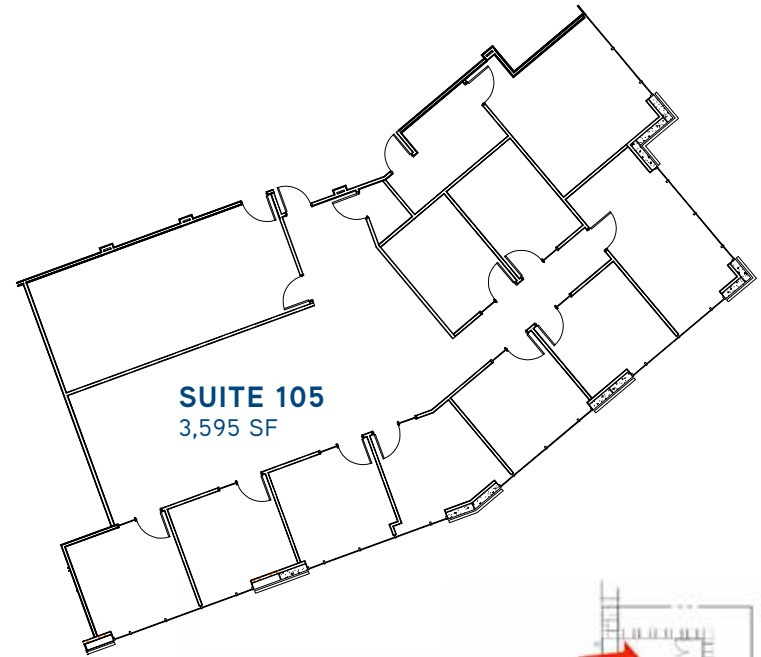
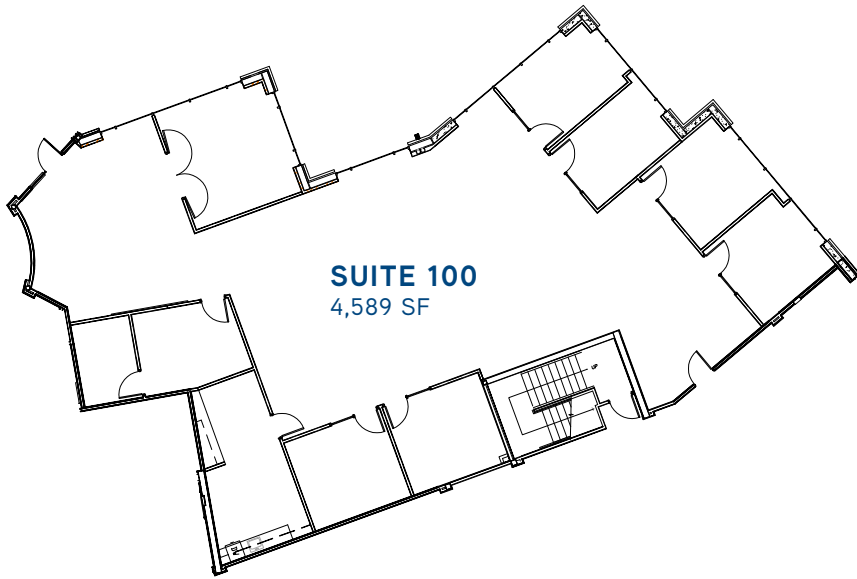
WiFi

FEATURES

- Washington County location with the ability to utilize a Portland or Tigard address
- Fantastic high ceiling height and natural light
- Abundant parking ratio with 4:1,000 SF
- Showers on site
- Common area WiFi
- Exterior signage possible
- Beautifully prepared suites ready to lease

\$26.50-\$28.50 /RSF FULL SERVICE





FOR LEASE 11850 SW 67th Avenue // Tigard, Oregon



JENNIFER MEDAK

Senior Vice President

+1 503 542 5899

jennifer.medak@colliers.com

JOHN MEDAK

Senior Vice President

+1 503 542 5898

john.medak@colliers.com

This document has been prepared by Colliers International for advertising and general information only. Colliers International makes no guarantees, representations or warranties of any kind, expressed or implied, regarding the information including, but not limited to, warranties of content, accuracy and reliability. Any interested party should undertake their own inquiries as to the accuracy of the information. Colliers International excludes unequivocally all inferred or implied terms, conditions and warranties arising out of this document and excludes all liability for loss and damages arising there from. This publication is the copyrighted property of Colliers International and/or its licensor(s). ©2018. All rights reserved.

Colliers International
851 SW Sixth Avenue | Suite 1200
Portland, OR 97204
P: +1 503 223 3123

