

FOR LEASE

Pringle Road Warehouse

📍 2475 Pringle Rd SE
Salem, OR 97302



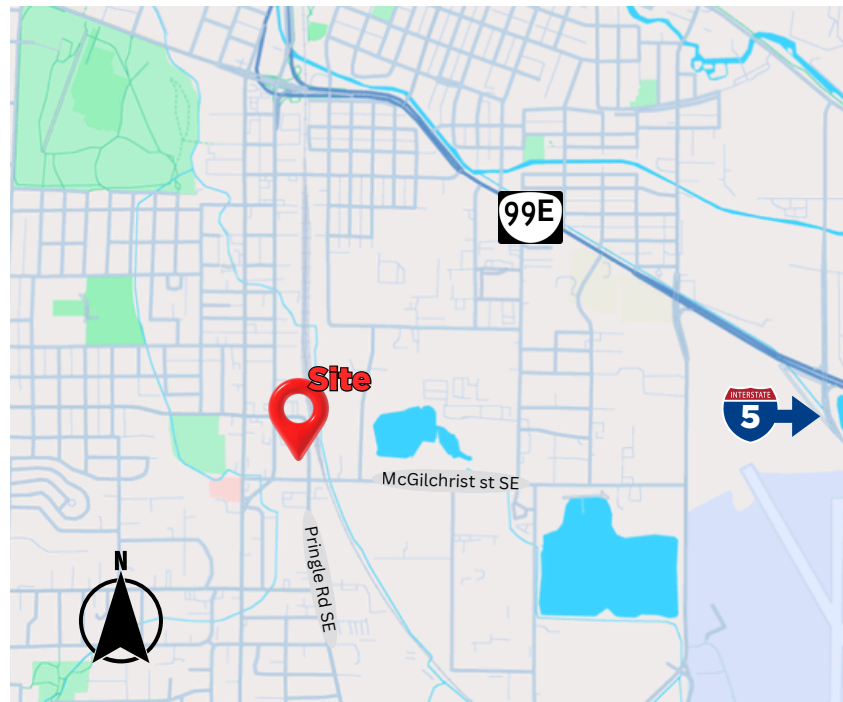
Imagine working in a
perfect space.

Location

- Five minutes to downtown Salem or I-5
- Centrally located, this corner site is ideally situated with easy access from all directions
- Intersection of Pringle and McGilchrist with access from both streets
- Close to amenities: Food, shopping, fitness & hotels.

Building Highlights

- Approx. 10,840 SF industrial building including approx. 2,261 SF of office/showroom
- Two grade level doors
- 3 phase power
- Four offices, conference and break rooms
- Locally-owned and managed
- Please call for competitive pricing and more info



For more information, please contact:
Mitch Page

📞 (503)626-3500 mitch

✉️ mitch.page@pnwprop.com

pnwprop.com

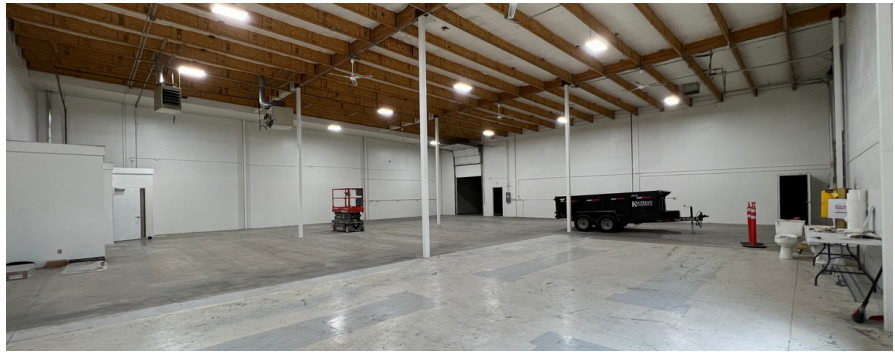
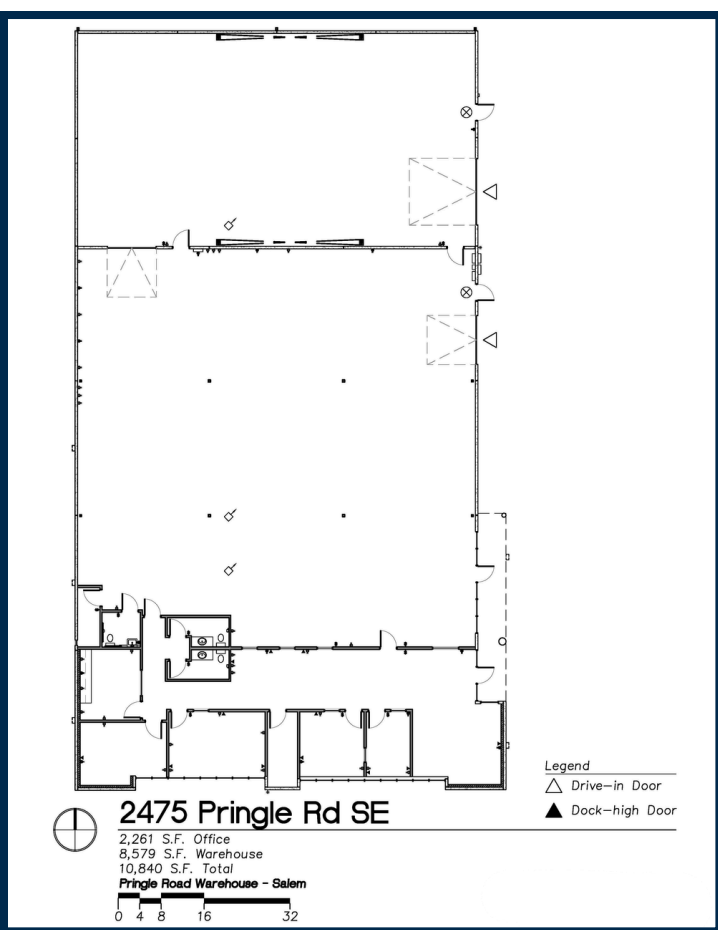
The information contained herein is believed to be accurate but is not warranted as to its accuracy and may change or be updated without notice.

PACIFIC NW
PROPERTIES

FOR LEASE

Pringle Road Warehouse

2475 Pringle Rd SE
Salem, OR 97302



For more information, please contact:
Mitch Page

☎ (503)626-3500

✉ mitch.page@pnwprop.com